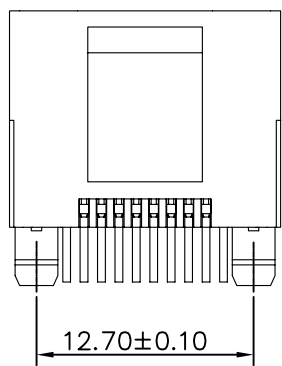
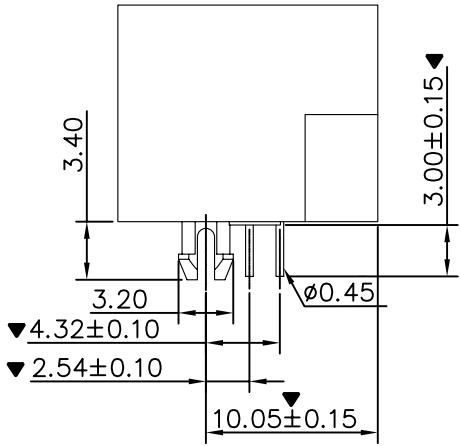
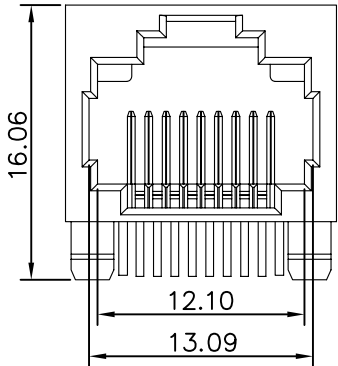
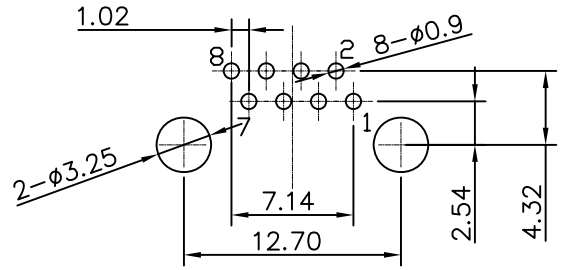
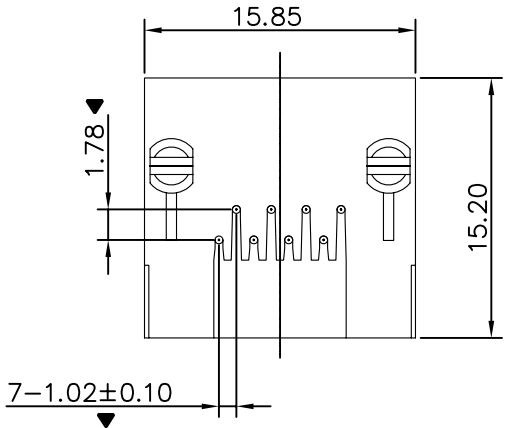


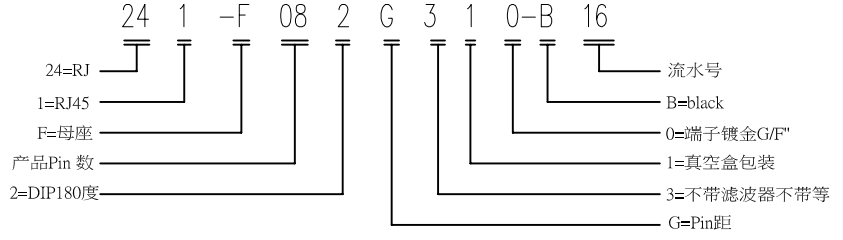
| | | | | | |
|---------|-------|---------|-------------|------|------|
| DATE | DR.BY | ECN.NO. | DESCRIPTION | MARK | VER. |
| 8/29'16 | | | NEW DWG | | AO |



NOTES:
 MATERIAL:
 1.HOUSING MATERIAL:GLASS FILLED POLYESTER(UL94V-0)
 2.CONTACT MATEIAL:PHOSPHOR BRONZE \varnothing 0.46mm (C5100).
 3.PLATING:GOLD PLATING OVER NICKEL.
 ELECTRICAL:
 1.VOLTAGE RATING:125 VAC RMS.
 2.CURRENT RATING:1.5 AMP
 3.CONTACT RESISTANCE:50 M Ω MAX
 4.INSULATION RESISTANCE:500 Ω MIN
 5.DIELECTRIC WITHSTANDING
 RESISTANCE : 1000V AC RMS 50Hz.1MIN
 MECHANICAL:
 1.DURRABILITY: 750 CYCLES MIN
 2.PCB RETENTION PRE-SOLDER: 1 LB MIN
 ENVIRONMENTAL:
 1.STORAGE : -40°C TO +85°C.
 2.OPERATION: 0°C TO 70°C



RECOMMENDED P.C.B LAYOUT
TOP VIEW (COMPONENT SIDE)



| | | | | | | | | | |
|---|-------|--|--------|--|------------|-------|------|------|------|
| -TOLERANCES- UNLESS OTHERWISE SPECIFIED 公差参考表 | | 东莞市龙科电子科技有限公司 DONGGUAN LONGKE ELECTRONICS CO.,LTD : | | | | | | | |
| X. | ±0.20 | X° | ±2.00° | TITLE: 产品品名 : RJ45 8P8C 全塑无灯 | | | | | |
| X.X | ±0.15 | | | PRODUCT NO: 产品料号 : 241-F082G310-B16 | | | | | |
| X.XX | ±0.10 | X.X° | ±1.00° | CHECK: 核准 : 罗求新 | DATE | SCALE | UNIT | TYPE | PAGE |
| X.XXX | ±0.03 | | | DRAW: 绘图 : 范小飞 | 2016.03.25 | 1:1 | mm | CD | 1/1 |